

# Ecotourism

We hope you enjoy your stay, it's a magical place with charming farm animals, magnificent endless stunning vistas, wooded avenues, whispering trees, a sparkling lake, picturesque hills and an abundance of wildlife, flora and fauna, these are just some of the delights that make us so special it'll have you coming back time again. And work on our farm doesn't stop through the seasons and neither does our hospitality, you are welcome anytime.



# Entertainment

- Feed the animals
- Canoe on the lake
- Trout Fishing
- Log Fires & a DVD
- Nature walks
- Visit the Local Destinations
- Climb the Tree Lookouts
- Wineries
- Art & Craft Galleries
- National Forests
- Train Rides



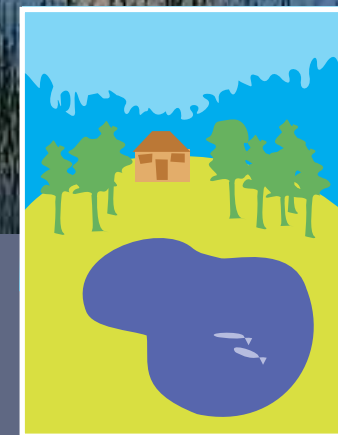
## ADDRESS

123 Strret Address

123 Strret Address 4568

123 Strret Strret Address

08 9654 4433



diamond forest  
*Cottages*



[www.diamondforestcottages.com.au](http://www.diamondforestcottages.com.au)

# Experience

Nestled in the land of the giant karri trees you will find our cosy farm cottages scattered in amongst the most stunning surrounds, with stunning countryside views as far as the eye can see. It's a magical place.

Abundant with ecological activity and characteristically charming friendly farm animals this is a perfect escape for an enchanting family farm-stay, group gathering or romantic getaway for two. Spend the night in a quaint wooden cottage by the warmth of a log fire and wake-up surrounded by the most magnificent and breathtaking views most spectacular at sunrise.

# Enjoy

Our self-contained cottages can sleep up-to six people and offers you all the amenities, TV, DVD, Games and compendium with all the local attractions. Your arrival will have you venturing out on the rolling green and welcomed by a crowd of over-friendly roaming chickens, ducks, peacocks.

Central to the 100 acre (actual size) property is a picturesque lake that will draw your attention to its mirror reflective surface and feel free to partake in a spot of complimentary trout fishing or canoeing. There are bushwalks, trails and avenues to stroll or giant tree top lookouts to climb nearby.

# Exhilaration

Help feed the farm animals daily, we have cute donkeys, Shetland ponies, cockies, horses, cows, llama, sheep, goats, bunny rabbits and the farm dog who all love children and you simply won't resist patting and talking to the animals.

Snug between Manjimup and Pemberton and only 250 kms from Perth, we are central to the most popular tourist destinations, galleries, wineries and culinary delights, you'll have difficulty fitting it all into your vacation. Discover the hidden gems in these old historic towns and a must for all visitors, the popular Diamond Tree and Glouster Tree look-outs only a short drive away to see the most surreal treetop canopy landscape well worth the climb.

